

Tackling London's Child Poverty Challenge

Every Child Really Matters in Enfield

Simon Deakin

Regeneration & Development Manager,
Education, Children's Service & Leisure Dept., L. B. Enfield

10th October 2007



Enfield Strategic
Partnership

LEADING ENFIELD'S FUTURE

Every child really does matter...

- Enfield's Local Area Agreement
- One of only **two** London authorities to major on child poverty
- Flagship project the ***One Large Intervention on child poverty and making families more prosperous (OLI)***, which will be managed by Enfield Council and overseen by the **Children's Trust Board**, a Thematic Action Group of the Enfield Strategic Partnership.



Enfield Strategic
Partnership
LEADING ENFIELD'S FUTURE

LAA Outcomes

By **2009**, we will have:

- Significantly **improved the lives of children** and their families currently living in poverty – making families more prosperous
- Focused on Every Child Matters
- Enabled people of all ages, ethnicities and disabilities to play a full and active part in the community



**Enfield Strategic
Partnership**

LEADING ENFIELD'S FUTURE

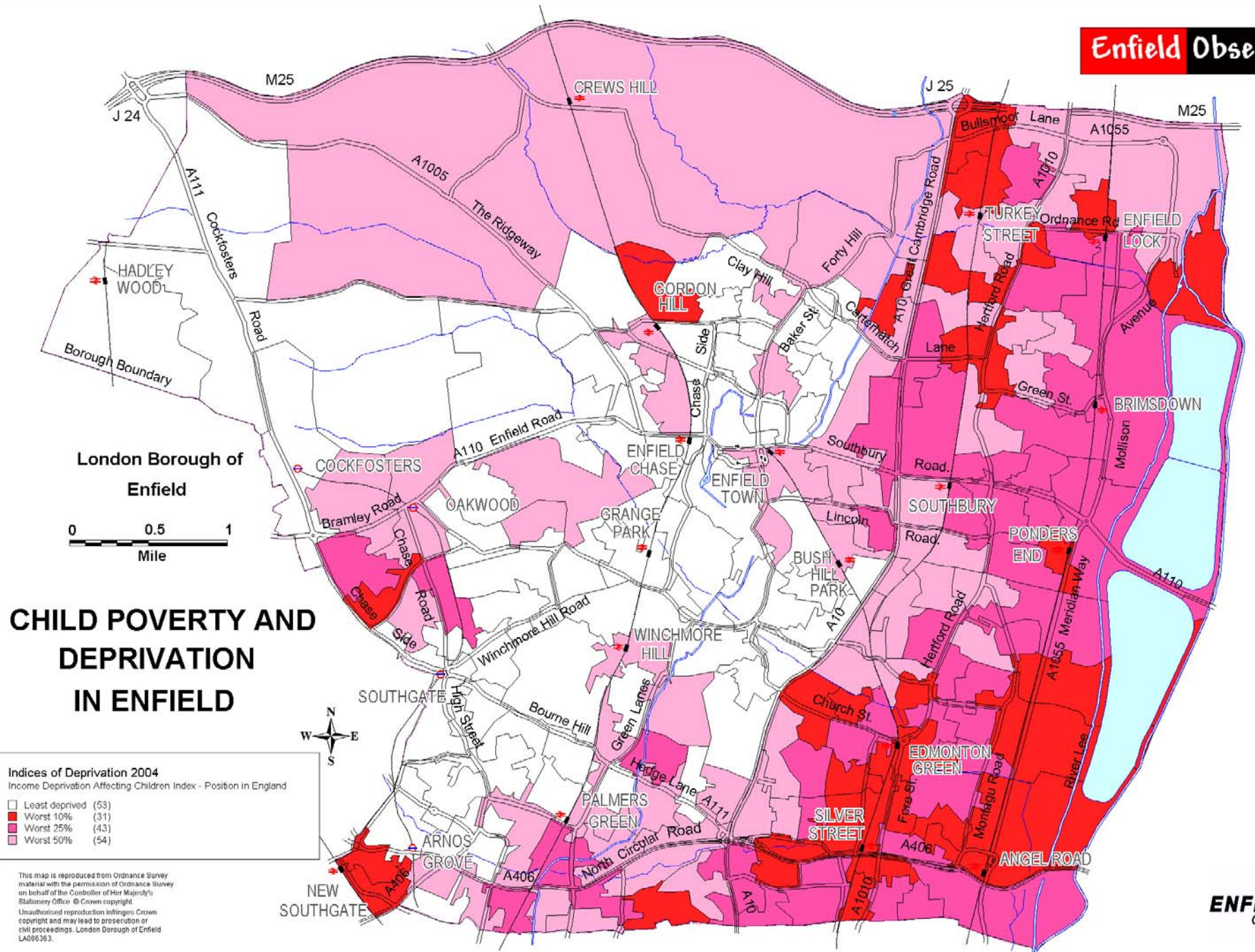
LAA Outcomes

- Strengthened the role of the **Voluntary and Community sector (VCS)**
- Improved the **life chances** of people living in our most deprived neighbourhoods, thereby narrowing the gap between different communities



**Enfield Strategic
Partnership**

LEADING ENFIELD'S FUTURE



CHILD POVERTY AND DEPRIVATION IN ENFIELD

Indices of Deprivation 2004
Income Deprivation Affecting Children Index - Position in England

Least deprived	(53)
Worst 10%	(31)
Worst 25%	(43)
Worst 50%	(54)

London Borough of Enfield

0 0.5 1
Mile

This map is reproduced from Ordnance Survey material with the permission of Ordnance Survey on behalf of the Controller of Her Majesty's Stationery Office. © Crown copyright. Unauthorised reproduction infringes Crown copyright and may lead to prosecution or civil proceedings. London Borough of Enfield LA086363.

Poverty in Enfield*

- Over **30%** of Enfield's children live in poverty (18 years and under living with families claiming benefit)
- In Neighbourhood Renewal areas it is **nearly 50%**
- **30th** worst authority in England & Wales for child poverty

*These figures do not include those in low paid work



**Enfield Strategic
Partnership**
LEADING ENFIELD'S FUTURE

Worklessness/low income in Enfield

- **Highest** for increase in lone parent claimants
- **28th highest** for increase in disabled claimants
- Enfield – 280,000
- Enfield **Working Age** – 178,000
- Enfield people **not working** – **38,000**
- Includes - **Job seekers** 7,000 - **ICB** 12,000
Lone Parents 7,000 – **Disabled** 2,000



One

Large

Intervention

Making families more prosperous in Enfield



**Enfield Strategic
Partnership**

LEADING ENFIELD'S FUTURE

OLI is...

- Funded from the **Neighbourhood Renewal Fund (NRF)**, **ERDF** and other sources
- A subset of the **LAA**
- An innovative programme by **Enfield Strategic Partnership (ESP)** taking a **holistic approach** to combating child poverty



**Enfield Strategic
Partnership**
LEADING ENFIELD'S FUTURE

OLI will...

- **Pool** expertise, resources and front-line services from a wide range of partners
- Address both **worklessness** and **education NRF floor targets**
- Contribute to **LAA targets** in the '**NRF area**'
- Support and assist the Voluntary & Community Sector (**VCS**) **capacity** to deliver services
- **Engage women and families** in training and job readiness



OLI will...

‘Be truly innovative with measurable outcomes that will feed into learning and improved service delivery across the borough’

(Enfield LAA 2006)



**Enfield Strategic
Partnership**

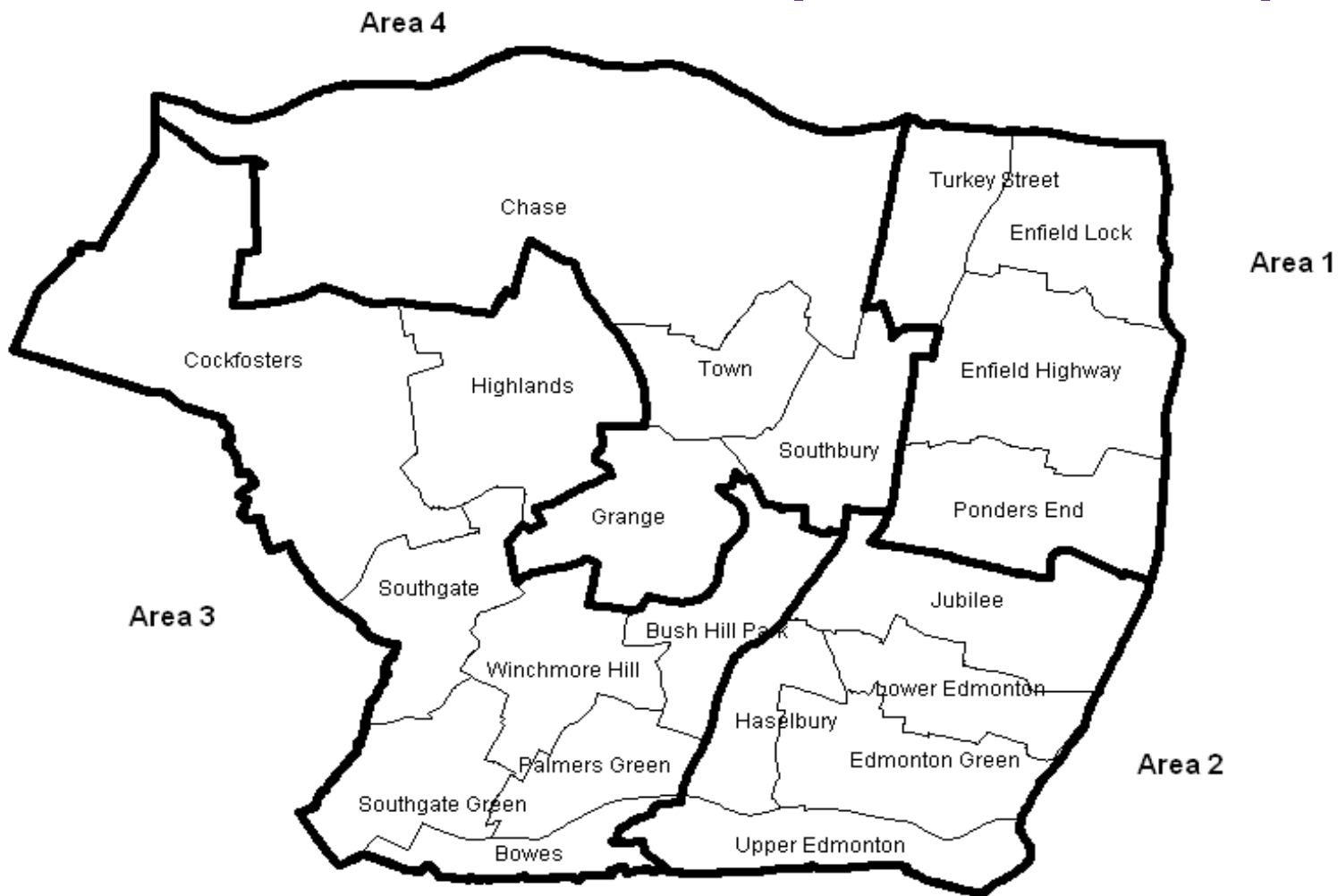
LEADING ENFIELD'S FUTURE

OLI will...

- **Enable** existing services to come together in new ways around children and families, and establish best practice
- **Enable** the first of four **Children's Area Partnerships (CAPs)** and based in Area 2 (the 'NRF area'). Learning from *OLI* will be used in the establishment of the other CAPs.



A base for the new Children's Area partnerships



OLI will consist of...

The physical dimension

- Two centres refurbished
 - **The Ark** – base for the Children's VCS
 - **Angel Centre** - community centre and base for the CAP/IST



Enfield Strategic
Partnership
LEADING ENFIELD'S FUTURE

OLI will consist of...

Interventions

- **Worklessness**
 - **Training and Skills**
 - **Jobs**
 - 13 weeks continuous employment
- **Educational attainment**
 - LAA **targets** – direct and proxy indicators
 - Absence
 - Activities
 - Attainment KS1-4



OLI will consist of...

Capacity building

- Children's **VCS** organisations
 - Training and Skills
 - Tackling worklessness
- Children's Services Integrated Support Team (**IST**)
- Information Advice & Guidance (**IAG**)
 - CAB, Lone Parents Advisors, Benefits etc.



OLI will consist of...

The legacy

- **Sustained activity** beyond the end of NRF and into the new LAA
- OLI as a **state of mind**
 - Joined up, intelligent, focused, personalised, localised approach to tackling child poverty



**Enfield Strategic
Partnership**
LEADING ENFIELD'S FUTURE